





Ex CERTIFICATED FTVS FLAME ARRESTOR

EXPLOSION-PROOF ENCLOSURE ACCESSORIES

en

01 - 2020

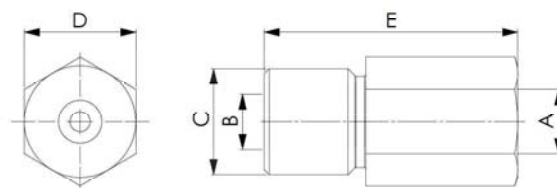
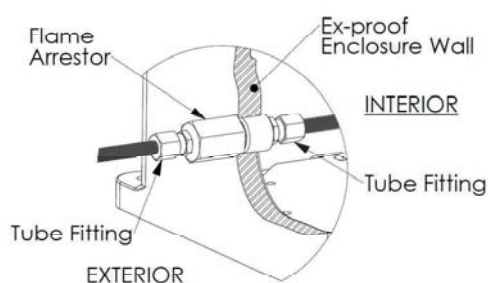


DESCRIPTION

Flame arrestor is a safety device purposed to prevent flame propagation inside process lines of a system to avoid an ignition. It provides connection of tubing systems for electro/pneumatic and gas/liquid analysis devices through the wall of the explosionproof enclosure. Pressure switches, moisture analyzers and gas analyzers/sensors are the typical applications.

It is suitable for the installation in the industrial plants with potentially hazardous atmosphere classified as Zone 1 and Zone 2 for gases and Zone 21 and Zone 22 for combustible dusts.

INSTALLATION SCHEME



SPECIFICATIONS

EXPLOSION PROTECTION	Conformity	ATEX Directive ATEX2014/34/UE
	Certification	ATEX - INERIS 12ATEX9013U IECEx - INE 12.0002U ISO 16852 : 2016
	Marking	II 2 GD Ex-db IIC T6/T5/T4 Gb Ex-eb IIC Gb Ex-tb IIIC T85°C/100°C/135°C Db IP66
TECHNICAL DATA	Ambient Temperature	ATEX -60°C / +65°C IECEx -60°C / +65°C
	Material	Stainless steel AISI 304 or AISI 316L Brass CW614N-MS Hastelloy Inconel
	IP Rating	IP66
	Sealing:	O-Ring made in Silicone (Optional)

CATALOG NO.	A	B	C	D	E
FTVS-61090-1	1/4" NPT	Ø8 max.	1/4" NPT	17	62
FTVS-61090-2	1/4" NPT	Ø8 max.	1/4" ISO	17	62
FT-61090-3	1/4" ISO	1/4" ISO	1/2" NPT	22	60
FT-61090-4	1/8" NPT	1/4" NPT	1/2" NPT	22	50
FT-61090-5	1/8" NPT	1/4" NPT	1/2" ISO	22	50
FT-61090-6	1/8" ISO	1/4" ISO	1/2" ISO	22	50
FT-61090-7	1/8" NPT	1/4" NPT	M22	22	50
FT-61090-8	1/4" NPT	1/4" NPT	1/2" NPT	22	60
FTVS-61090-11	1/4" NPT	Ø3,5	1/8" NPT	17	62
FT-61090-12	M16	M16	M20	22	62
FT-61090-13	1/4" NPT	3/8" NPT	M20	22	62
FT-61090-14	M16	M20	M25	27	62
FT-61090-15	1/2" NPT	1/2" NPT	3/4" NPT	27	62
FTVS-61090-16	1/4" NPT	Ø8 max.	1/4" NPT	22	56

ORDER EXAMPLE:
FT-61090-8 A (material AISI 316L)

Material Table	CODE	MATERIAL
	A	AISI Series 316L Steel
	C	AISI Series 304 Steel
	B	Brass
	H	Hastelloy
	I	Inconel

APPLICATION NOTE

1. Permissible maximum enclosure volume is 68 lt for IIC and 150 lt for IIB+H2.
2. Maximum flow pressure: 40 bar
3. Pressure drop: 0.09 bar at 17 lt/min

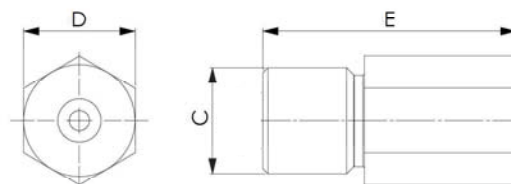
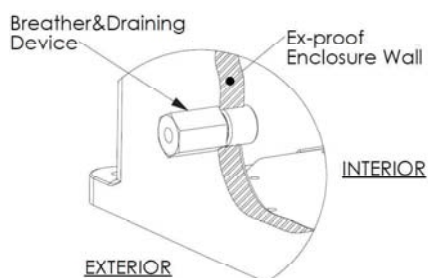


DESCRIPTION

Breathing&draining devices which permits an exchange between the atmosphere within an enclosure and the surrounding atmosphere or permits liquids to flow out from an enclosure and which maintains the integrity of the type of protection.

It is suitable for the installation in the industrial plants with potentially hazardous atmosphere classified as Zone 1 and Zone 2 for gases and Zone 21 and Zone 22 for combustible dusts.

INSTALLATION SCHEME



SPECIFICATIONS

EXPLOSION PROTECTION

Conformity	ATEX Directive ATEX2014/34/UE
Certification	ATEX - INERIS 12ATEX9013U IECEX - INE 12.0002U
Marking	II 2 GD Ex-dB IIC T6/T5/T4 Gb Ex-eb IIC Gb Ex-tb IIIC T85°C/100°C/135°C Db IP66

TECHNICAL DATA

Ambient Temperature	ATEX -60°C / +65°C IECEX -60°C / +65°C
Material	Stainless steel AISI 304 or AISI 316L Brass CW614N-MS Hastelloy Inconel
IP Rating	IP66
Sealing:	O-Ring made in Silicone (Optional)

APPLICATION NOTE

1. Permissible maximum enclosure volume is 68 lt for IIC and 150 lt for IIB+H2.

CATALOG NO.	C	D	E
VS-61090-1	1/4" NPT	17	50
VS-61090-4	1/2" NPT	22	50
VS-61090-5	1/2" ISO	22	50
VS-61090-9	1/2" NPT	22	50
VS-61090-10	1/2" ISO	22	50
VS-61090-11	1/8" NPT	17	50
VS-61090-14	M25	27	62
VS-61090-15	3/4" NPT	27	62
VS-61090-17	M20	22	50

ORDER EXAMPLE:
VS-61090-17 B (material brass)

Material Table	CODE	MATERIAL
	A	AISI Series 316L Steel
	C	AISI Series 304 Steel
	B	Brass
	H	Hastelloy
	I	Inconel



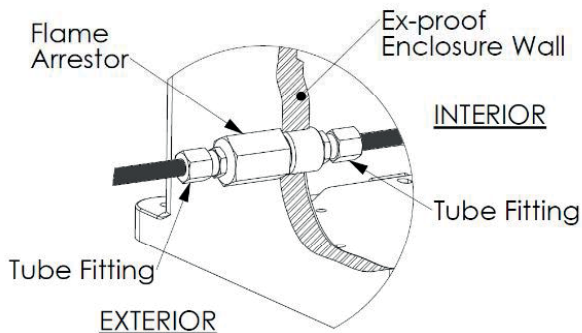
DESCRIPTION

FT-CROSS Flame arrestor enhanced flow designed and developed for application that require higher flow than our FT-VS series.

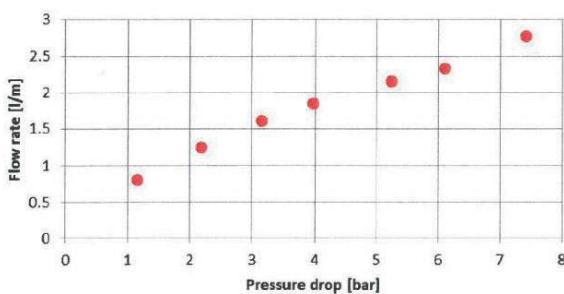
Flame arrestor is a safety device proposed to prevent flame propagation in-side process lines of a system to avoid an ignition. It provides connection of tubing systems for electro/pneumatic and gas/liquid analysis devices through the wall of the explosion proof enclosure. Pressure switches, moisture analyzers, gas analyzers/sensors, vaccum applications and pressure transmitter applications are the typical applications.

It is suitable for the installation in the industrial plants with potentially hazardous atmosphere classified as Zone 1 and Zone 2 for gases, Zone 21, and Zone 22 for combustible dusts.

INSTALLATION SCHEME



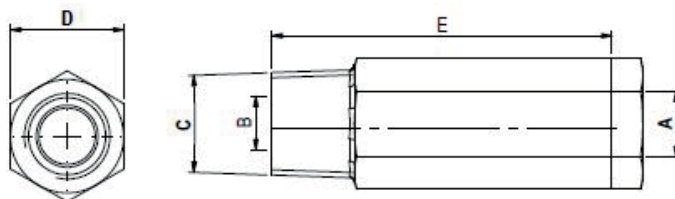
FT - Cross



PRESSURE DROP

SPECIFICATIONS

EXPLOSION PROTECTION	Conformity	ATEX Directive ATEX2014/34/UE
	Certification	ATEX - INERIS 19ATEX9002U IECEX - INE 19.0003U
	Marking	II 2GD Ex db IIC T5 Gb Ex eb IIC Gb Ex tb IIIC T100°C Db IP66
	Standards	EN 60079-0 EN 60079-1 EN 60079-7 EN 60079-31
TECHNICAL	Ambient Temperature	ATEX -60°C / +65°C IECEX -60°C / +65°C
	IP Rating	IP66
	Sealing	O-Ring with Silicon (Optional)



Details of Dimension "A"

N	1/2" NPT
L	3/8" NPT
S	1/4" NPT

CATALOG NO.	A	B	C	D	E
FT-CROSS-1	L/S	1/8" NPT	1/2" NPT	22	66
FT-CROSS-2	L/S	1/8" ISO	1/2" NPT	22	66
FT-CROSS-3	L/S	1/4" NPT	1/2" NPT	22	66
FT-CROSS-4	L/S	1/4" ISO	1/2" NPT	22	66
FT-CROSS-5	N	1/4" NPT	3/4" NPT	27	72
FT-CROSS-6	N	1/4" ISO	3/4" NPT	27	72
FT-CROSS-7	N	1/2" NPT	3/4" NPT	27	72
FT-CROSS-8	N	1/2" ISO	3/4" NPT	27	72
FT-CROSS-9	L/S	1/8" NPT	1/2" ISO	22	66
FT-CROSS-10	L/S	1/8" ISO	1/2" ISO	22	66
FT-CROSS-11	L/S	1/4" NPT	1/2" ISO	22	66
FT-CROSS-12	L/S	1/4" ISO	1/2" ISO	22	66
FT-CROSS-13	L/S	1/4" NPT	M16	22	66
FT-CROSS-14	L/S	M16	M20	22	72
FT-CROSS-15	L/S	3/8" NPT	M20	22	72
FT-CROSS-16	N	M20	M25	27	72

ORDER EXAMPLE

FT	CROSS	4	C	N
----	-------	---	---	---

Entry A
Material
Type of thread
Type
Product

Material Table	CODE	MATERIAL
	A	AISI Series 316L Steel
	C	AISI Series 304 Steel
	B	Brass
	H	Hastelloy
	I	Inconel

APPLICATION NOTE

1. Permissible maximum enclosure volume is 68 lt for IIC and 150 lt for IIB+H2.
2. Maximum flow pressure: 40bar



OFFICINE MECCANICHE M.A.M. Srl | Via Vico Veneto, 32, 20090, Pieve Emanuele (MI), ITALY

t +39 0290400419 **f** +39 0290400423 **e** info@mamitaly.it **w** www.mamitaly.it

Copyright © Mamitaly.it